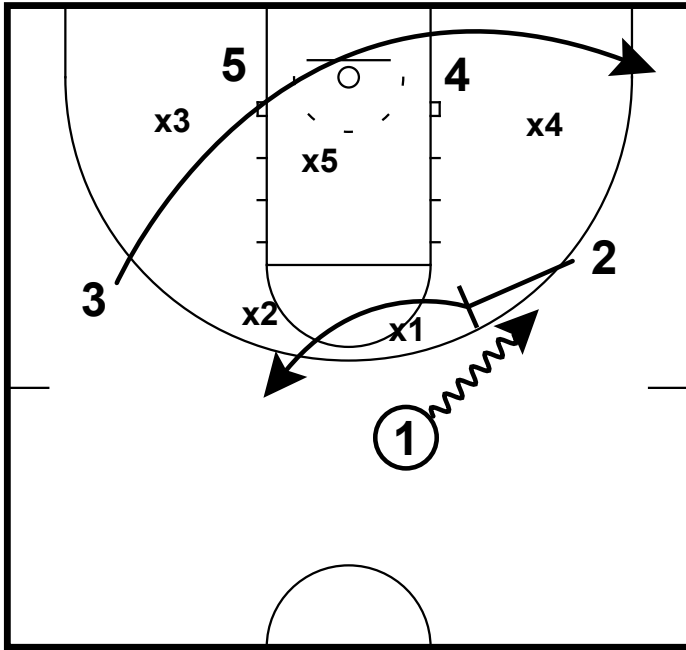


Kansas Zone Attack v Duke

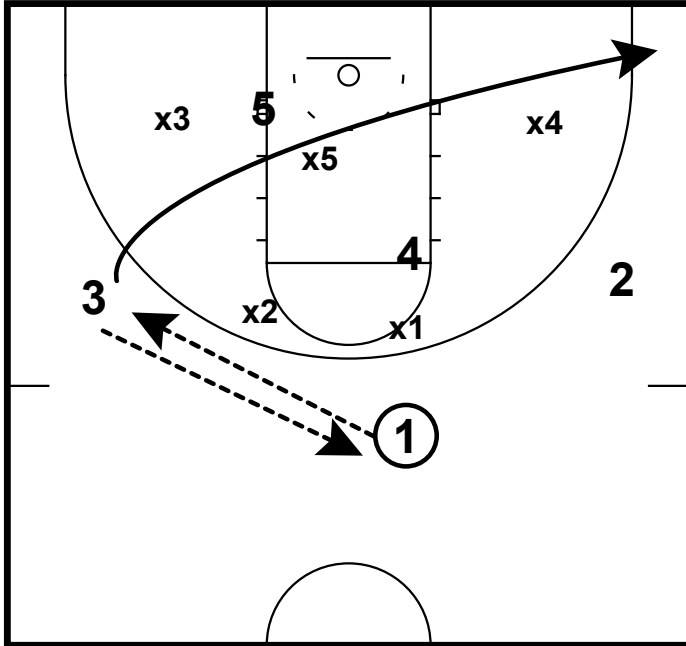
Pick and Pop (Strong Side Overload)



3 cuts through to strong side corner
2 sets step up pick and pop for 1

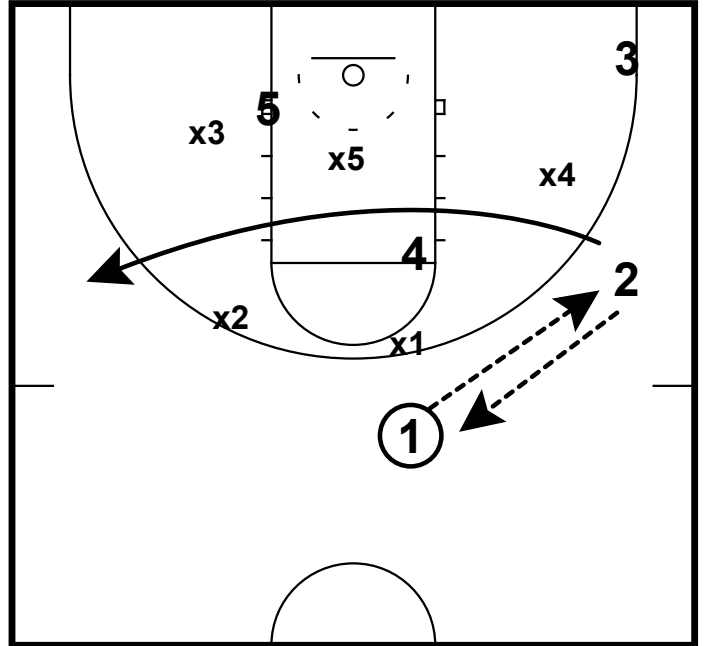
Kansas Zone Attack v Duke

Pick and Pop (Weak Side Overload)



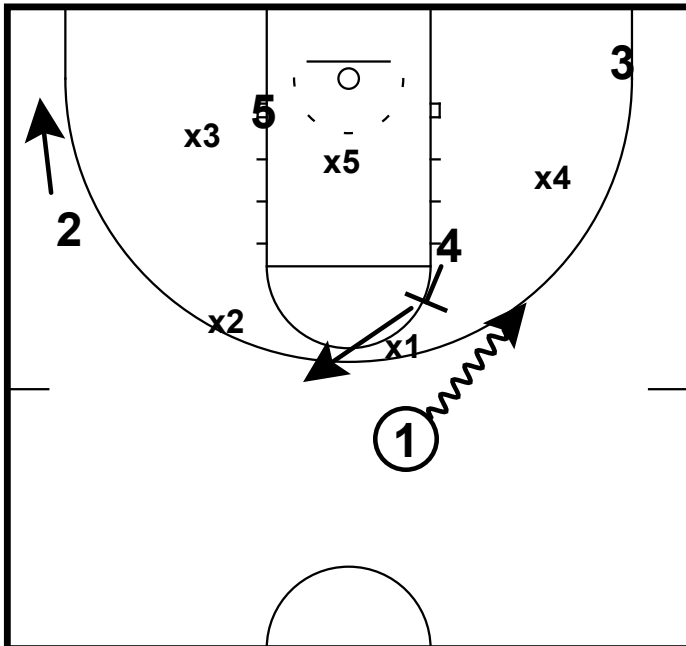
1 passes to 3
3 passes back to 1
3 cuts through zone to opposite corner

Pick and Pop (Weak Side Overload)



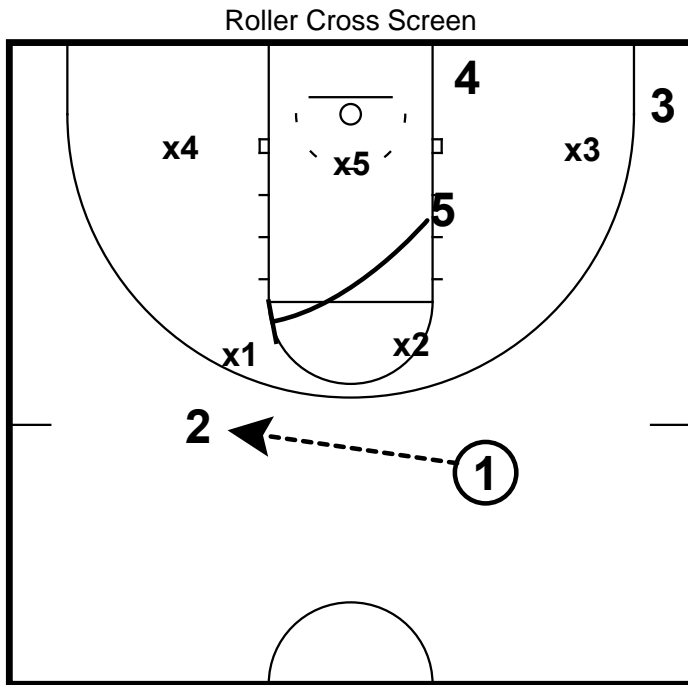
1 passes to 2
2 passes back to 1
2 cuts through zone to opposite wing

Pick and Pop (Weak Side Overload)

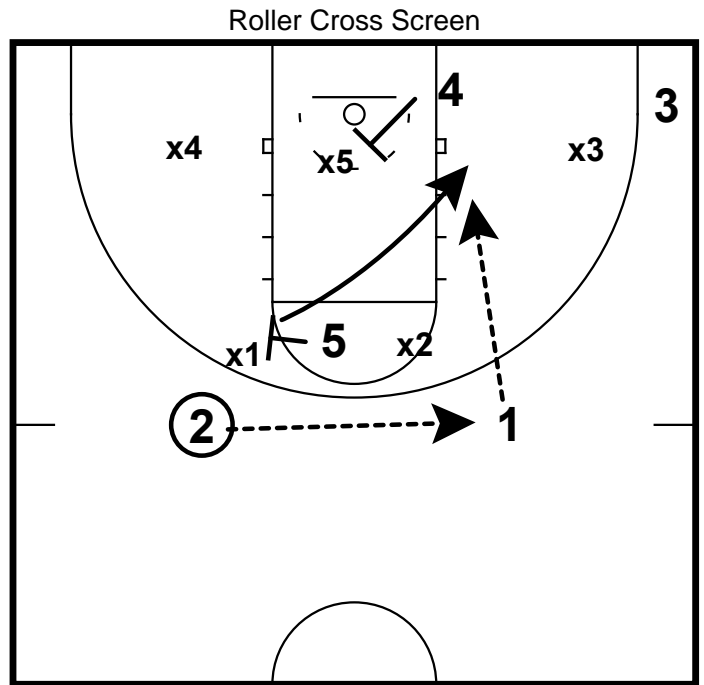


4 sets step up screen for 1
4 pops

Kansas Zone Attack v Duke

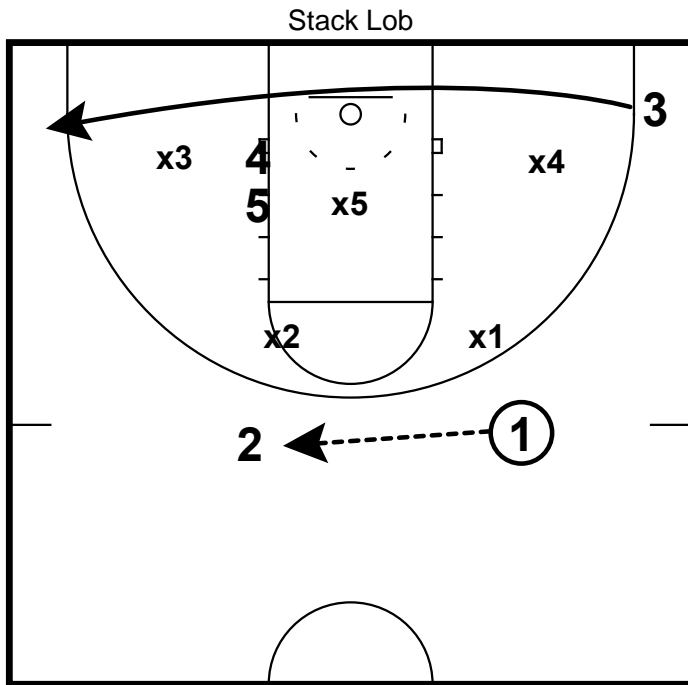


1 swings to 2
5 sprints into BS for 2

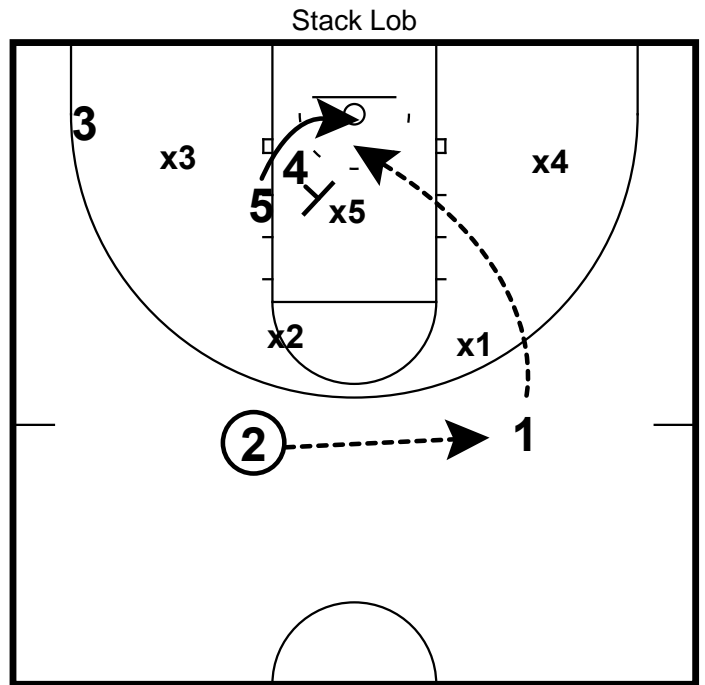


2 comes off 5's BS and hits across to 1
4 cross screens x5
1 enters to 5 rolling to block

Kansas Zone Attack v Duke



1 passes to 2
3 runs across baseline past 4/5 screening



2 passes back to 1
4 sets back screen on x5
1 throws lob to 5